



NAVIGATOR

- ▶ **DIGITAL AND OFFSET PREPRESS WORKFLOW**
- ▶ **OUTPUT TO CTP, DIGITAL PRESSES, PRODUCTION PRINTERS AND PROOFERS**
- ▶ **PROOF TO INDUSTRY STANDARD PRINTING CONDITIONS**
- ▶ **CONTROL JOBS FROM ANY WORKSTATION**



YOUR BUSINESS. OUR DRIVE.

prepressuk.com
the specialist in software and hardware solutions for designers & printers





NAVIGATOR

Prepress automation and throughput are essential for remaining competitive in print. With a modular Navigator Workflow, your prepress department will be equipped to meet the demands of your clients today and tomorrow. No matter the size of your operation, the Navigator Workflow can be configured to meet your requirements.

NAVIGATOR WORKFLOW FOR DIGITAL AND OFFSET PRODUCTION

▶ REMOTE CONTROL FROM YOUR DESKTOP

Navigator Workflow helps increase productivity, manages your work, and reduces costs. With an intuitive Mac and Windows user interface, an operator is able to manage and control jobs from most any prepress workstation. Specific workflow sequences can be designated and stored, greatly reducing the opportunity for error. An exceptional tool for job tracking, load balancing, PDF creation, preflighting and automated job preparation; Navigator Workflow includes features and capabilities that can substantially increase the productivity of the prepress department making the Navigator Workflow the heart of your print operation.

▶ JOB TRACKING AND MANAGEMENT

Job tracking and control has never been easier. The workflow sorts jobs by name, status, priority, and job number. The management system also keeps copies of the job at all stages of the workflow. This allows jobs to be easily resubmitted without going back to the original design application to be reprinted. Tracking helps ensure that the version approved by the client will be the version which is sent for output and printing.

▶ NATIVE FILE PROCESSING

Navigator natively processes PostScript™, XPS, and PDF files. Native interpretation is both faster and more accurate.

NAVIGATOR WORKFLOW FEATURES AND OPTIONS

Navigator workflow solutions include a number of standard and optional features to automate and increase prepress productivity.

▶ PREFLIGHT



Preflighting automatically checks files adhere to a standard and performs fixes to common problems.

▶ INTEGRATED IMPOSITION



Integrated imposition based on Dynagram's inpO2 stores impositions within the workflow alongside single page files, preflight reports, proofs, and plate files.

▶ INK REMAPPING



Ink Remapping allows the user to easily reassign inks to specific plates, ensuring the proper numbers of plates are created for each job.

▶ UNIVERSAL OUTPUT PLUG-IN



The Universal Output Plug-in connects your workflow to virtually any Windows-based printer allowing the use of existing printers for content and layout proofs.

▶ ROOM PROOFING



ROOM Proofing generates the proof from the same high resolution bitmaps used to image the printing plates, ensuring accurate, predictable, and consistent results.

▶ PROOFING



Support for proofers and printers from Canon, Epson and other manufacturers for either single page or full layout contract prints is available. With out-of-the box colour accuracy and ICC profiles that meet industry standard printing conditions including Gracol™, SWOP and Fogra, Xitron proofing plug-ins deliver proofs to match your press output.

▶ SCRIPTABLE HOT FOLDERS

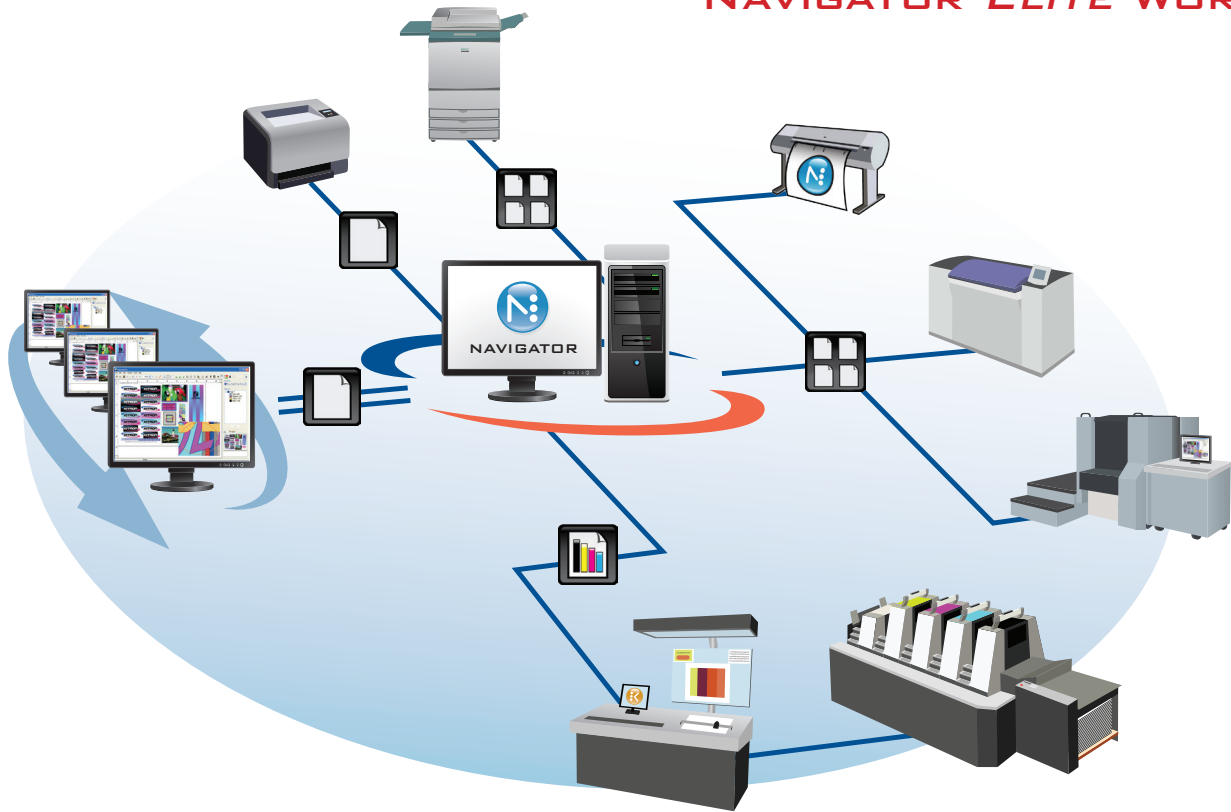


Scriptable folders allow users to customize the way Navigator Elite Workflow routes incoming jobs. Optional custom engineering allows your existing systems and applications to connect with the workflow.



YOUR BUSINESS. OUR DRIVE.

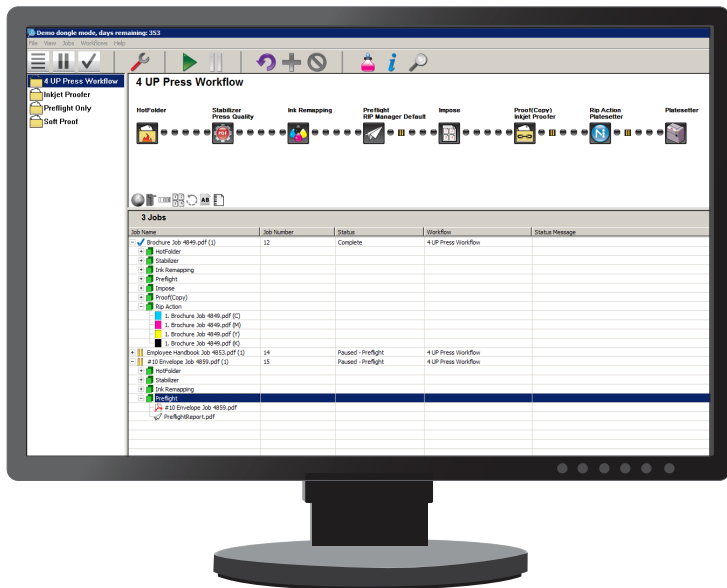
NAVIGATOR ELITE WORKFLOW



TRAPPRO



In-RIP trapping handles trapping automatically as jobs are sent to the RIP. TrapPro uses an object-based, raster-aware engine that traps everything the RIP renders with pixel accuracy. TrapPro has the features that print professionals require, including sliding traps, feathered traps, chokes, super blacks, and small object protection.



SCREENING



Navigator Workflow offers screening technology designed to resolve printing quality issues. Standard AM screening provides high resolution output up to 300 lines per inch. Optional FM screening increases sharpness and offers relief from cross screens and object moiré. HXM hybrid screen option allows even greater control and higher line frequencies to be achieved at lower resolutions resulting in superior image quality and increased production speeds.

CONNECTIVITY



Connect to any of the hundreds of devices supported by Xitron, including film imagesetters, CtP, inkjet printer and proofers, digital presses, and production printers. Xitron's output interfaces make it easy to support new devices by simply purchasing a new interface without requiring you to replace the entire workflow.

INK KEY PRE-SETTING



Link your workflow to the press room to save time, paper and ink on your offset presses. Navigator Workflow integrates with CIP3 Ink-key presetting systems to preset your presses saving you money everytime you make-ready.



SUPPORT BEHIND THE SOLUTIONS

Your investment in a Navigator Workflow includes not only the software and interface, but the expertise to make this solution successful in your business. Prepress UK offers support contracts with assistance via email, telephone and onsite when required. Using advanced Internet technology, Prepress UK's technical specialists are able to diagnose and repair most problems remotely. Our extensive industry experience brings you leading prepress support. Our expert installation, training and support will protect your investment, paying dividends for years to come.

NAVIGATOR PRODUCT COMPARISON CHART

	Navigator RIP	Navigator GPS Lite	Navigator GPS	Navigator Elite
Clients & Interfaces				
Control & Feedback at operator workstations-Mac & PC <i>(Includes/Maximum)</i>		1/2	2/12	2/12
Management of multiple RIPs from client workstation			✓	✓
Job tracking through client interface		✓	✓	✓
Preview of RIP file on operator workstation from 3%-800%		✓	✓	✓
Workflow				
User definable job tickets and workflow for specific jobs/clients		✓	✓	✓
Operator defined inspection points within a job's flow		✓	✓	✓
Job tracking		✓	✓	✓
Automated job archiving		✓	✓	✓
Output to third-party application/RIP via export			✓	✓
Ink Remapping				✓
PDF Creation and Stabilization				✓
PDF Preflighting				✓
RIP				
Load balance between 2 or more RIPs (additional RIPS and RIP Support required)			✓	✓
PostScript and PDF 1.7 native processing	✓	✓	✓	✓
In-RIP Trapping				✓
Imposition				
Integrated imposition-Dynagram inpO2 Basic (for each client)				2 copies
Imposition upgrade to inpO2 Pro, Complete, or Automate				
Proofing				
Universal Print workflow action (content and layout proofs to any Windows printer)			✓	✓
PDF Raster soft-proofing plug-in				✓
Direct RIP Output				✓
ROOM Proofing				✓
Ink key setting				
Automated press ink key setting capability				

✓ indicates included features. Featured not included may be added as required for an additional charge.

CONTACT YOUR XITRON DEALER FOR MORE INFORMATION:

PREPRESS UK

BRIGHTON AND CHELTENHAM
 E: SALES@PREPRESSUK.COM
 T: 0845 052 0701
 W: WWW.PREPRESSUK.COM

CORPORATE HEADQUARTERS

4880 VENTURE DRIVE, SUITE 500
 ANN ARBOR, MICHIGAN 48108
 MAIN: 734.913.8080
 FAX: 734.913.8088
 XITRONSALES@XITRON.COM



YOUR BUSINESS. OUR DRIVE.

WWW.XITRON.COM



WWW.PREPRESSUK.COM